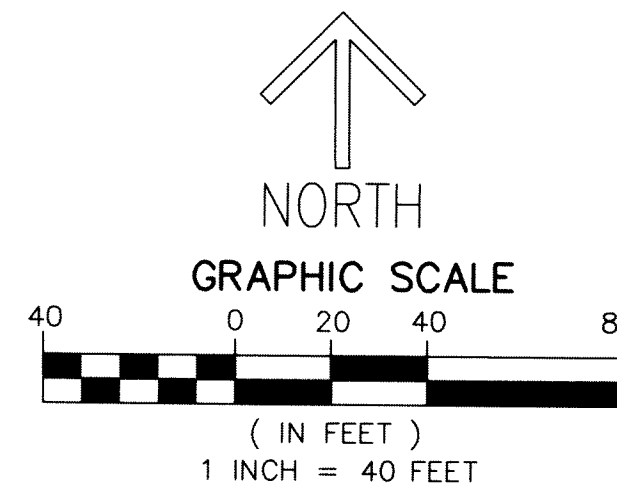


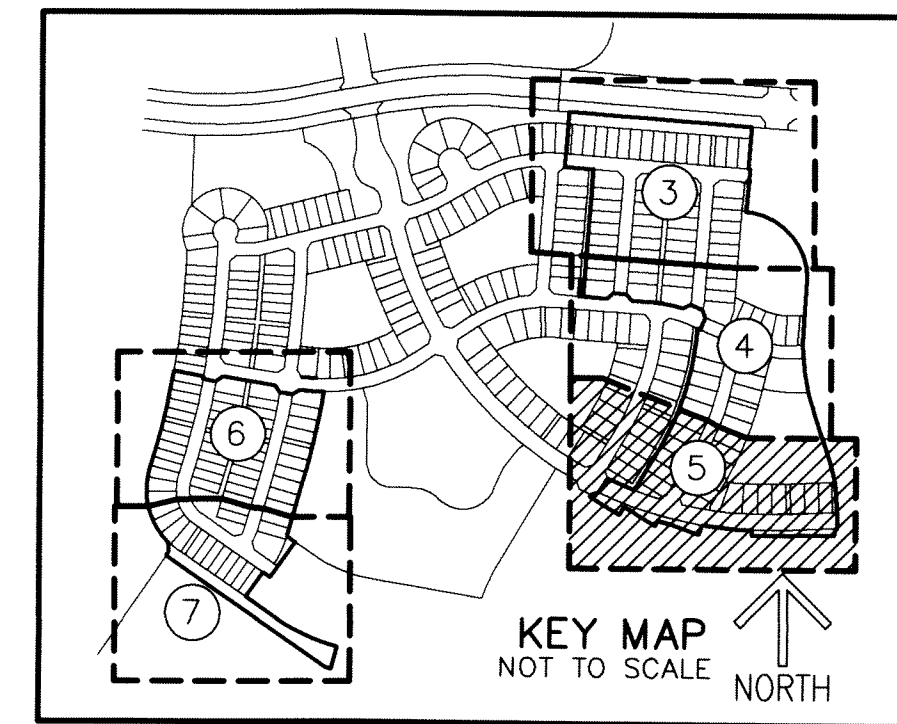
THIS INSTRUMENT PREPARED BY  
 DAVID P. LINDLEY  
 OF  
**CAULFIELD and WHEELER, INC.**  
 SURVEYORS - ENGINEERS - PLANNERS  
 7900 GLADES ROAD, SUITE 100  
 BOCA RATON, FLORIDA 33434 - (561)392-1991  
 CERTIFICATE OF AUTHORIZATION NO. LB3591

# CRESSWIND PALM BEACH PHASE 2

BEING A PORTION OF SECTION 6, TOWNSHIP 43 SOUTH, RANGE 41 EAST,  
 AND SECTIONS 1 AND 12, TOWNSHIP 43 SOUTH, RANGE 40 EAST,  
 CITY OF WESTLAKE, PALM BEACH COUNTY FLORIDA

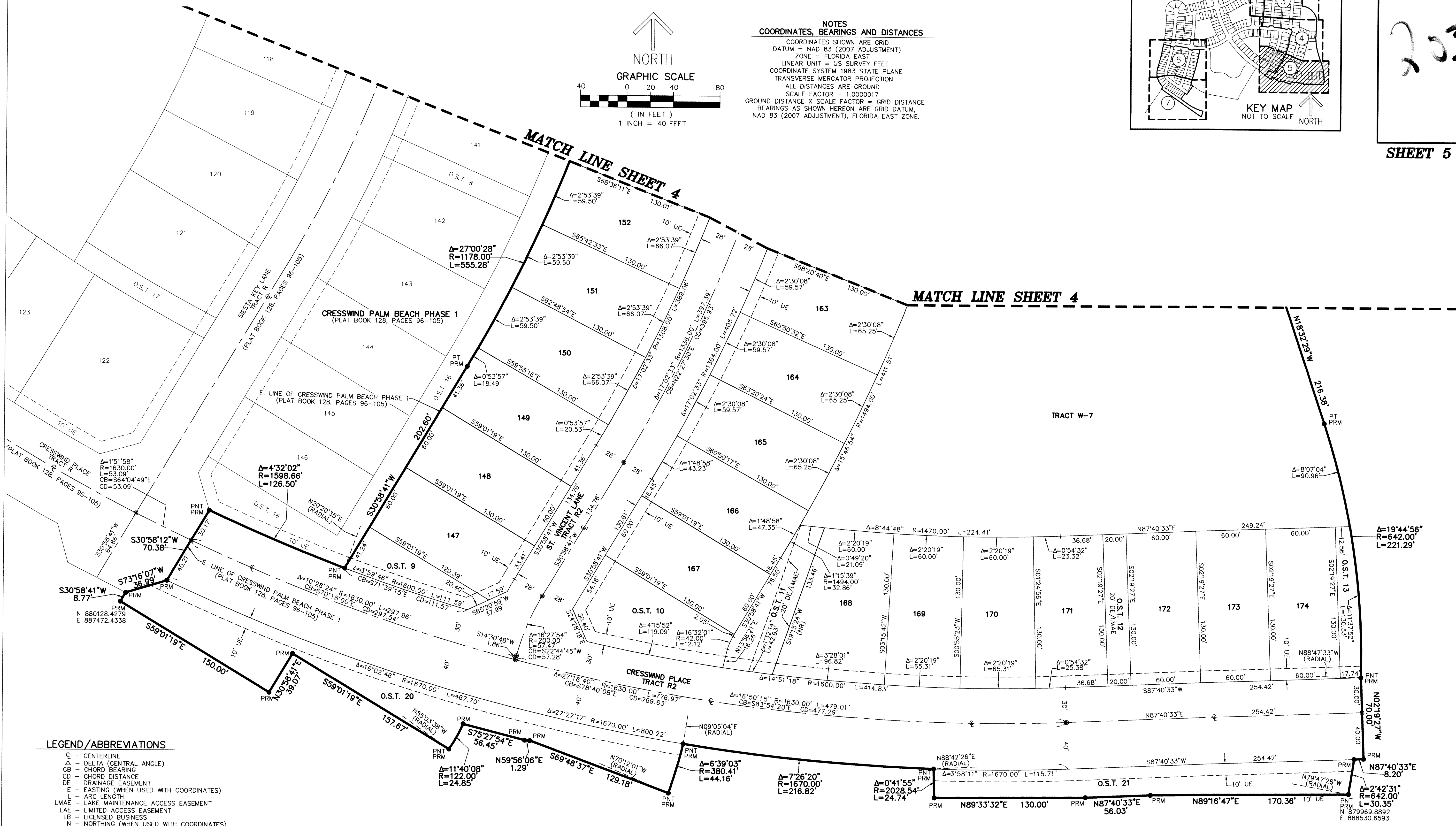


**NOTES**  
 COORDINATES, BEARINGS AND DISTANCES  
 COORDINATES SHOWN ARE GRID  
 DATUM = NAD 83 (2007 ADJUSTMENT)  
 ZONE = FLORIDA EAST  
 LINEAR UNIT = US SURVEY FEET  
 COORDINATE SYSTEM 1983 STATE PLANE  
 TRANSVERSE MERCATOR PROJECTION  
 ALL DISTANCES ARE GROUND  
 SCALE FACTOR = 1.0000017  
 GROUND DISTANCE X SCALE FACTOR = GRID DISTANCE  
 BEARINGS AS SHOWN HEREON ARE GRID DATUM,  
 NAD 83 (2007 ADJUSTMENT), FLORIDA EAST ZONE.



203

SHEET 5 OF 7



- LEGEND/ABBREVIATIONS**
- CL - CENTERLINE
  - Δ - DELTA (CENTRAL ANGLE)
  - CB - CHORD BEARING
  - CD - CHORD DISTANCE
  - DE - DRAINAGE EASEMENT
  - E - EASTING (WHEN USED WITH COORDINATES)
  - ARC - ARC LENGTH
  - LMAE - LAKE MAINTENANCE ACCESS EASEMENT
  - LAE - LIMITED ACCESS EASEMENT
  - LB - LICENSED BUSINESS
  - (NR) - NORTHING (WHEN USED WITH COORDINATES)
  - (NR) - NON-RADIAL LINE
  - O.S.T. - OPEN SPACE TRACT
  - PC - POINT OF CURVATURE
  - PT - POINT OF TANGENCY
  - PNT - POINT OF NON-TANGENCY
  - PRC - POINT OF REVERSE CURVATURE
  - R - RADIUS
  - RPE - RURAL PARKWAY EASEMENT
  - U.E. - UTILITY EASEMENT
  - ⊙ - SET PERMANENT CONTROL POINT  
 NAIL AND DISK STAMPED "C&W PRM LB3591"
  - - SET PERMANENT REFERENCE MONUMENT  
 SET 5/8" IRON ROD WITH CAP  
 STAMPED "C&W PRM LB3591"
  - - FOUND PERMANENT REFERENCE MONUMENT  
 4" x 4" x 24" CONCRETE MONUMENT WITH  
 DISK STAMPED "PRM LB7768"

UNPLATTED  
 A PORTION OF SECTION 6  
 TOWNSHIP 43 SOUTH, RANGE 41 EAST